



**India Meteorological Department  
(Ministry of Earth Sciences)**

**BULLETIN NO.33: (ARB/01/2021)**

**TIME OF ISSUE: 1330 HOURS IST**

**DATED: 18.05.2021**

**FROM: INDIA METEOROLOGICAL DEPARTMENT (FAX NO. 24643965/24699216/24623220)**

**TO: CONTROL ROOM, NDM, MINISTRY OF HOME AFFAIRS (FAX.NO. 23092398/23093750)**

**CONTROL ROOM NDMA (FAX.NO. 26701729)**

**CABINET SECRETARIAT (FAX.NO.23012284, 23018638)**

**PS TO HON'BLE MINISTER FOR S & T AND EARTH SCIENCES (FAX NO.23316745)**

**SECRETARY, MOES (FAX NO. 24629777)**

**H.Q. (INTEGRATED DEFENCE STAFF AND CDS) (FAX NO. 23005137/23005147)**

**DIRECTOR GENERAL, DOORDARSHAN (23385843)**

**DIRECTOR GENERAL, AIR (23421101, 23421105, 23421219)**

**PIB MOES (FAX NO. 23389042)**

**UNI (FAX NO. 23355841)**

**D.G. NATIONAL DISASTER RESPONSE FORCE (NDRF) (FAX NO. 26105912, 2436 3260)**

**DIRECTOR, PUNCTUALITY, INDIAN RAILWAYS (FAX NO. 23388503)**

**CHIEF SECRETARY, GOA (FAX NO. 0832-2415201)**

**CHIEF SECRETARY, MAHARASHTRA (FAX NO. 022- 22028594)**

**CHIEF SECRETARY, GUJARAT (FAX NO. 079-23250305)**

**CHIEF SECRETARY, DAMAN & DIU (FAX NO. 0260-2230775)**

**CHIEF SECRETARY, DADRA & NAGAR HAVELI (FAX NO. 0260-2645466)**

**CHIEF SECRETARY, RAJASTHAN (FAX NO. 0141-2227114)**

**Subject: Cyclonic Storm "Tauktae" (pronounced as Tau'Te) over Saurashtra**

The **Severe Cyclonic Storm "Tauktae" (pronounced as Tau'Te)** over Saurashtra moved north-northeastwards with a speed of about 10 kmph during past 06 hours, weakened into a Cyclonic Storm and lay centred at 1130 hours IST of today, the 18<sup>th</sup> May, 2021 over Saurashtra near latitude 22.0°N and longitude 71.5°E, about 50 km northeast of Amreli, 80 km south of Surendranagar and 165 km southwest of Ahmedabad.

It is very likely to move north-northeastwards and weaken gradually into a Deep Depression during next 06 hours and into a Depression during the subsequent 06 hours. The remnant of the system is very likely to move north-eastwards across Rajasthan to west Uttar Pradesh during 19<sup>th</sup> & 20<sup>th</sup> May.

Gale force winds & heavy to very heavy rainfall and extremely heavy falls occurred at isolated places over north Konkan (including Mumbai) and Coastal districts of Saurashtra during the past 24 hours ending at 0830 Hrs IST of today.

Chief amounts of rainfall in centimetres are:

**Coastal Maharashtra:** Juhu – 33.0, Ram Mandir – 30.4, Palghar – 29.8, Dahanu – 28.3, Mumbai (Santacruz) – 23.0, Devgarh – 22.6, Sawantwadi – 21.0, Mumbai (Colaba) – 20.1, Mira Road – 22.4, Zari – 19.2, Talasari – 16.7, Kanchad – 14.3, Alibagh – 13.5, Ratnagiri – 10.1

Gujarat: Bagasara (Amreli Distt): 21.2, Surat- 9.3, Diu: 8.6, Bhavnagar: 7.8, Amreli – 12.5, Gir Gadhada (Gir Somenath)-18.5, Una (Gir Somenath): 17.5, Umergam (Valsad): 18.3, Savarkundla (Amreli): 16.7, Palitana (Bhavnagar): 15.8, Amreli (Amreli): 13.1, Mahua (Bhavnagar): 12.8, Rajula (Amreli): 12.7; Khambha (Amreli): 12.7, Babra (Amreli): 12.7,

Gadhda (Botad): 10.5 , Visavdar (Junagarh): 9.7 , Umralla (Bhavnagar): 8.5 , Dhari (Amreli): 7.2 , Bhavnagar (Bhavnagar): 7.1 , Jesar (Bhavnagar): 6.8 .

Forecast track and intensity are given in the following table:

Date/Time(IST)	Position (Lat. °N/ long. °E)	Maximum sustained surface wind speed (Kmph)	Category of cyclonic disturbance
18.05.21/1130	22.0/71.5	80-90 gusting to 100	Cyclonic Storm
18.05.21/1730	22.9/71.9	55-65 gusting to 75	Deep Depression
18.05.21/2330	23.7/72.3	40-50 gusting to 60	Depression
19.05.21/0530	24.4/72.9	35-45 gusting to 55	Depression

### Warnings:

#### (i) Rainfall:

- **Gujarat:** Light to moderate rainfall at most places with heavy to very heavy falls isolated places very likely over Gujarat region and Saurashtra on 18<sup>th</sup> May.
- **Rajasthan:** Light to moderate rainfall at many places with heavy to very heavy falls at isolated places very likely over south Rajasthan on 18<sup>th</sup> & heavy falls at isolated places over north Rajasthan on 19<sup>th</sup> May.

#### (ii) Wind warning

- Gale wind speed reaching 70-80 kmph gusting to 90 kmph is likely to prevail over Gulf of Khambhat and adjoining northeast Arabian Sea during next 06 hours. It is likely to reduce gradually thereafter.
- Gale wind speed reaching 40-50 gusting to 60 kmph along & off extreme north Maharashtra coast during next 06 hours.
- Gale winds speed reaching 90-100 kmph gusting to 110 kmph likely to prevail over Amreli, Bhavnagar, Botad, 80-90 kmph gusting to 100 kmph over Surendranagar, Rajkot, Anand, South Ahmedabad: 50-60 kmph gusting to 70 kmph over Diu, Gir Somnath, Junagarh, Kheda, Bharuch, Jamnagar, Porbandar & Morbi during next 06 hours and gradually decrease thereafter.  
Squally wind speed reaching 45-55 kmph gusting to 65 kmph likely to prevail along and off Dadra, Nagar Haveli, Daman, Valsad, Navsari, Surat, districts and 35-45 kmph gusting to 55 kmph over Devbhoomi Dwarka & Kutch during next 06 hours and gradually decrease thereafter.
- Squally wind speed reaching 45-55 kmph gusting to 65 kmph is likely to prevail over south Rajasthan from the evening of 18<sup>th</sup> till 19<sup>th</sup> early morning.

**(iii) Sea condition**

- Sea conditions will be very rough to High over Gulf of Khambhat and adjoining northeast Arabian Sea and along & off south Gujarat, Daman, Diu, Dadra & Nagar Haveli coasts during next 12 hours and improve gradually thereafter.
- Sea conditions will be rough to very rough along & off north Maharashtra coast during next 12 hours and improve thereafter.

**(iv) Storm surge warning**

Tidal wave above astronomical tide is likely to inundate coastal areas during next 03 hours, as per details below:

**About 1-2 meter (m) over Anand & Amreli, Gir Somnath, Diu, Bhavnagar, 1 m over Bharuch, southern parts of Ahmedabad, Surat, Navsari, Valsad.**

**(v) Fishermen Warning**

- The fishermen are advised not to venture into northeast & adjoining eastcentral Arabian Sea along & off north Maharashtra, south Gujarat, Daman, Diu, Dadra & Nagar Haveli coasts till the evening of 18<sup>th</sup> May.

**(vi) (A) Damage Expected over Amreli Junagarh, Gir Somnath, Botad, Bhavnagar Ahmedabad, Rajkot, Bharuch, Anand, Kheda districts of Gujarat:**

- Damage to thatched houses/ huts.
- Minor damage to power and communication lines.
- Major damage to Kutcha and some damage to Pucca roads.
- Breaking of tree branches, uprooting of trees. Moderate damage to banana and papaya trees. Large dead limbs blown from trees.

**(vi) (B) Damage expected over interior districts of Gujarat (Districts apart from those mentioned under warning) and over southern districts of Rajasthan on 18<sup>th</sup> May 2021.**

- (i) Minor damage to power and communication lines. (ii) Damage to Kutcha Roads. (iii) Breaking of tree branches, uprooting of small trees. (iv) Damage to banana and papaya trees.

**(vii) Action Suggested:**

- Judicious regulation of rail and road traffic.
- People in affected areas to remain indoors.

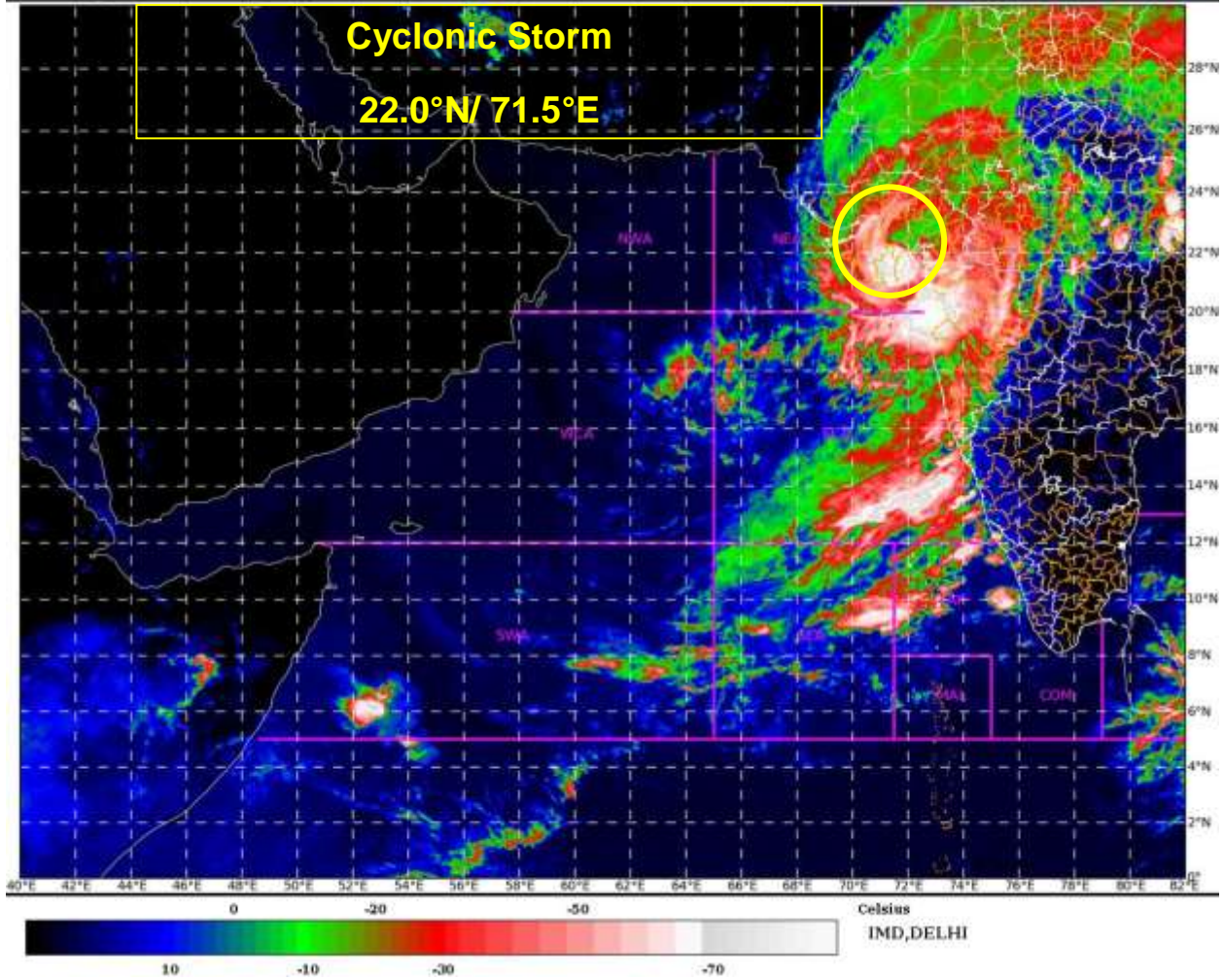
The next bulletin will be issued at 1730 hrs IST of 18<sup>th</sup> May, 2021.

**(Sunitha Devi. S)  
Scientist-F, RSMC, New Delhi**

Copy to: MC Jaipur /ACWC Mumbai /CWC Ahmedabad.

SAT : INSAT-3D IMG  
IMG\_TIR1\_TEMP 10.8 um  
ARABIAN SEA

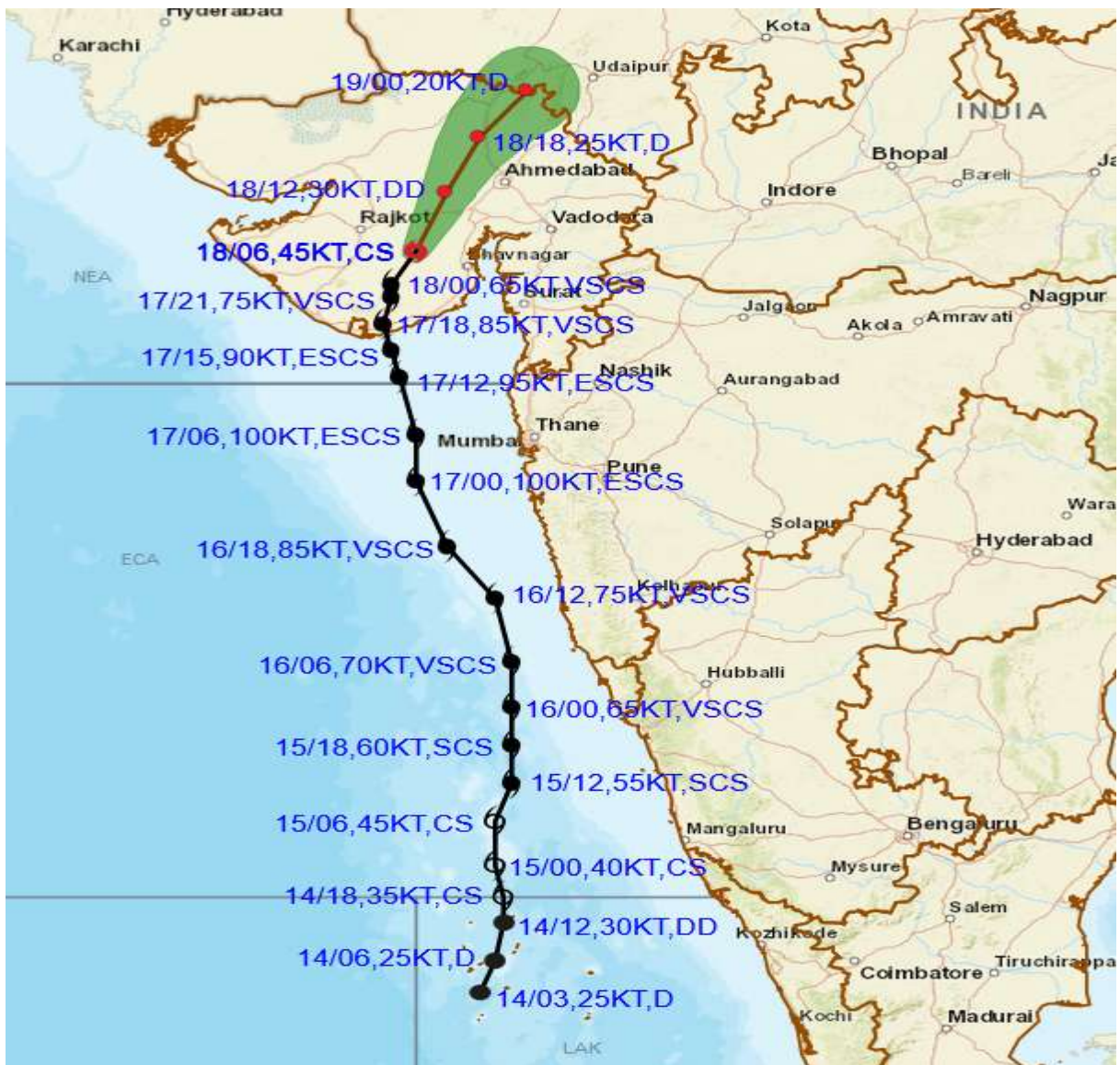
18-05-2021/(0700 to 0727) GMT  
18-05-2021/(1230 to 1257) IST







## OBSERVED AND FORECAST TRACK ALONGWITH CONE OF UNCERTAINTY OF CYCLONIC STORM "TAUKTAE" OVER SAURASHTRA BASED ON 0600 UTC OF 18<sup>TH</sup> MAY, 2021



**DATE/TIME IN UTC**  
**IST=UTC + 0530**  
**L: LOW PRESSURE AREA**  
**WML: WELL MARKED LOW PRESSURE AREA**  
**D: DEPRESSION (17-27 KT)**  
**DD: DEEP DEPRESSION (28-33 KT)**  
**CS: CYCLONIC STORM (34-47 KT)**  
**SCS: SEVERE CYCLONIC STORM (48-63KT)**  
**VSCS: VERY SEVERE CYCLONIC STORM (64-89 KT)**  
**ESCS: EXTREMELY SEVERE CYCLONIC STORM (90-119 KT)**  
**SuCS: SUPER CYCLONIC STORM ( $\geq$  120 KT)**

- LESS THAN 34 KT
- 34-47 KT
- $\geq$  48 KT
- OBSERVED TRACK
- FORECAST TRACK
- CONE OF UNCERTAINTY



## OBSERVED AND FORECAST TRACK ALONGWITH QUADRANT WIND DISTRIBUTION OF CYCLONIC STORM "TAUKTAE" OVER SAURASHTRA BASED ON 0600 UTC OF 18TH MAY, 2021



DATE/TIME IN UTC  
 IST=UTC + 0530  
 L: LOW PRESSURE AREA  
 WML: WELL MARKED LOW PRESSURE AREA  
 D: DEPRESSION (17-27 KT)  
 DD: DEEP DEPRESSION (28-33 KT)  
 CS: CYCLONIC STORM (34-47 KT)  
 SCS: SEVERE CYCLONIC STORM (48-63 KT)  
 VSCS: VERY SEVERE CYCLONIC STORM (64-89 KT)  
 ESCS: EXTREMELY SEVERE CYCLONIC STORM (90-119 KT)  
 SuCS: SUPER CYCLONIC STORM ( $\geq$  120 KT)

● LESS THAN 34 KT  
 ○ 34-47 KT  
 ●  $\geq$  48 KT  
 — OBSERVED TRACK  
 — FORECAST TRACK  
 — CONE OF UNCERTAINTY  
 AREA OF MAXIMUM SUSTAINED WIND SPEED:  
 ■ 28-33 KT (52-61 KMPH)  
 ■ 34-49 KT (62-91 KMPH)  
 ■ 50-63 KT (92-117 KMPH)  
 ■  $\geq$  64 KT ( $\geq$  118 KMPH)

### IMPACT OVER THE SEA

MSW (knot/kmph)	Impact	Action
28-33 (52-61)	Very rough seas	Total suspension of fishing operations
34-49 (62-91)	High to very high seas	Total suspension of fishing operations
50-63 (92-117)	Very high seas	Total suspension of fishing operations
$\geq$ 64 ( $\geq$ 118)	Phenomenal	Total suspension of fishing operations





# WIND WARNING FOR GUJARAT STATE FOR NEXT 06 HOURS

